

Public Meeting for the Patchogue Former MGP Site

December 17, 2009, Village of Patchogue, New York



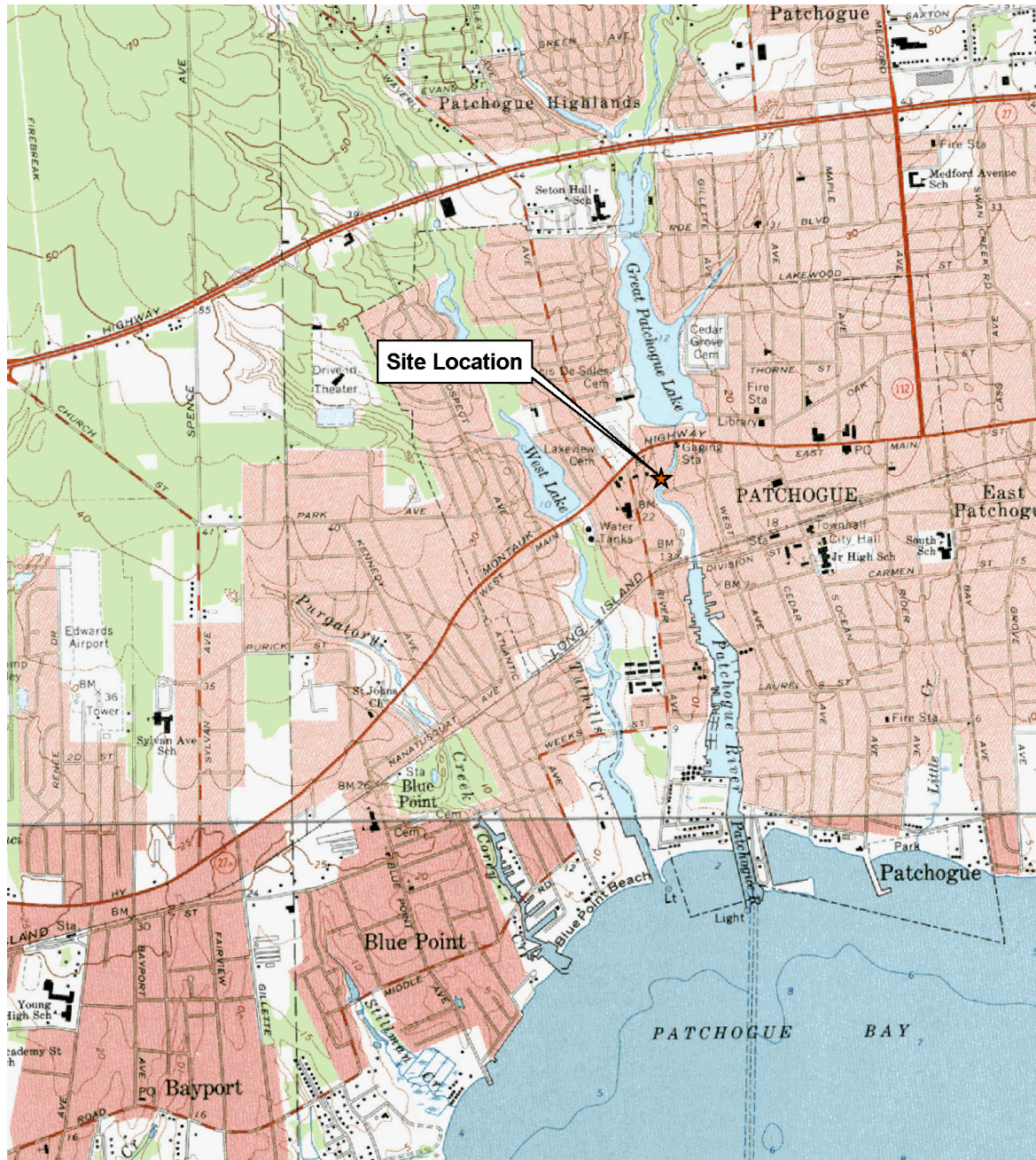
TETRA TECH EC, INC.

Introduction/Outline

- ◆ Introduction
- ◆ What is a Manufactured Gas Plant Site (MGP)?
- ◆ Typical Environmental Impacts
- ◆ Site History
- ◆ Previous Investigation
- ◆ Remedial Investigation Approach
- ◆ Remedial Investigation Results
- ◆ Groundwater Monitoring
- ◆ Summary
- ◆ Future Steps
- ◆ Questions



Patchogue Former MGP Site



Current Site Setting



Patchogue Former MGP Site

Site History

- ◆ Patchogue MGP constructed in 1904 and produced gas through 1914 and intermittently into the 1920's
- ◆ Modified the MGP facility to distribute gas produced off site until the 1970's when LILCO sold the site to third parties
- ◆ Most recently, the site was used as a refrigeration equipment and scrap storage yard
- ◆ A Preliminary Site Assessment (PSA) was conducted in 2001 and the report was finalized in 2002
- ◆ KeySpan (LILCO successor) acquired the site in May 2005 for remediation purposes.
- ◆ A Remedial Investigation (RI) was conducted by National Grid (KeySpan successor) in 2008-2009



Approximately 1940's

Previous Investigation - PSA

- ◆ Preliminary Site Assessment (PSA) conducted in 2001
 - ◆ Consisted of a detailed record review, site reconnaissance, field survey, sample collection, sample analysis, and reporting.
 - ◆ Site sampling activities included surface soil, subsurface soil, groundwater, surface water, sediment, and test trench sampling and analysis.
 - ◆ Sampling efforts for the PSA were focused on areas indicating visible residual impacts (e.g., stained soils, sheens, tars/oils, and odors) potentially attributable to the former MGP operations.
 - ◆ Based upon the PSA results, a Remedial Investigation (RI) was recommended by the NYSDEC to further investigate the Patchogue site.

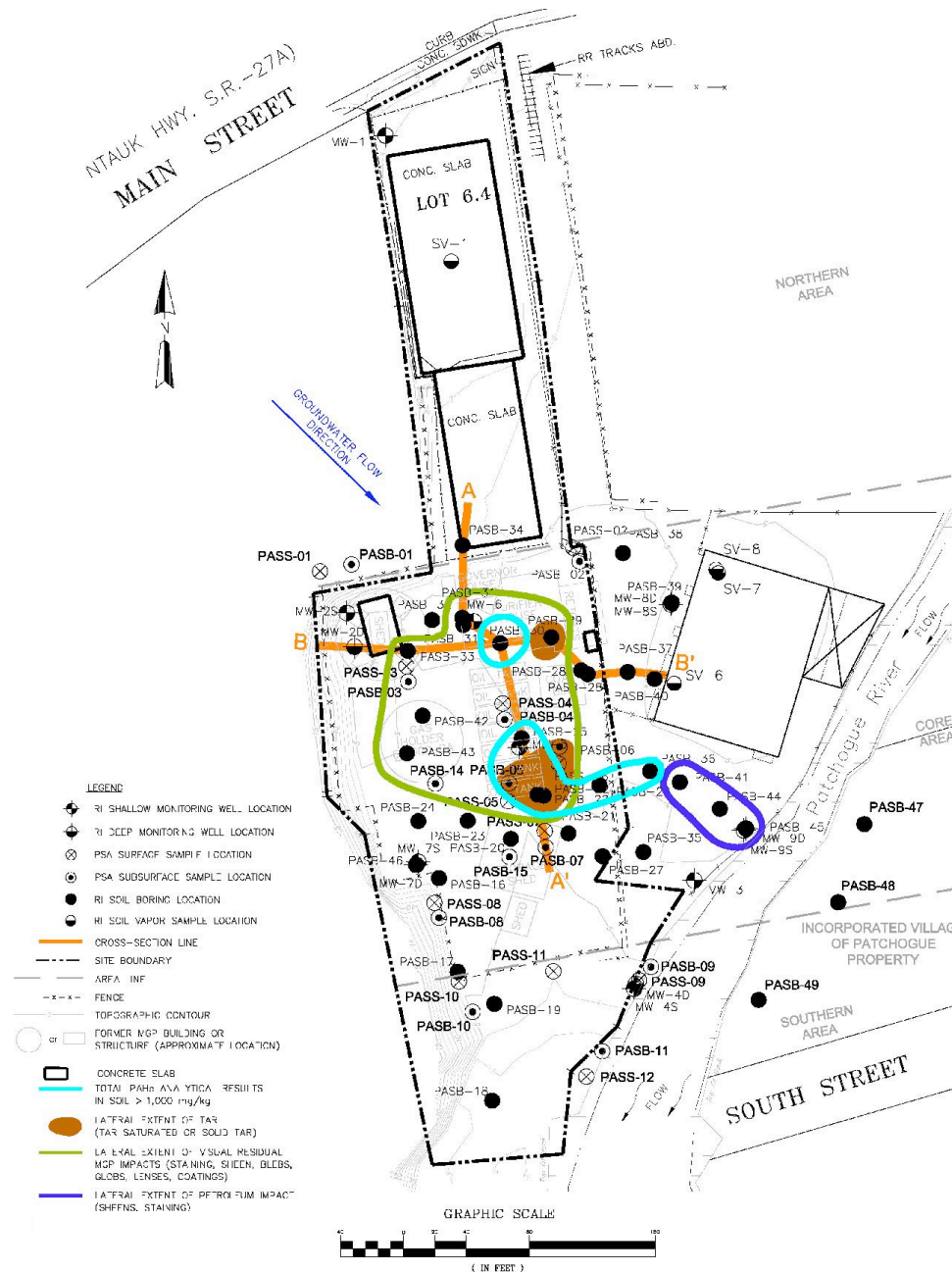
Remedial Investigation Approach

- ◆ A Work Plan was prepared and approved by NYSDEC
- ◆ RI field investigation was conducted in 2008-2009
- ◆ RI data was evaluated to determine additional sampling needs
- ◆ The evaluation concluded that additional investigation was necessary; and thus completed
- ◆ RI Report was prepared, submitted, and approved by NYSDEC

Remedial Investigation Scope

- ◆ 37 Soil Borings
- ◆ 2 Test Trenches
- ◆ 14 Monitoring Wells (9 shallow and 5 deep)
- ◆ 10 Sediment Samples
- ◆ 5 Surface Water Samples
- ◆ 4 Soil Vapor Samples
- ◆ 1 Indoor Air and 1 Ambient Air Sample

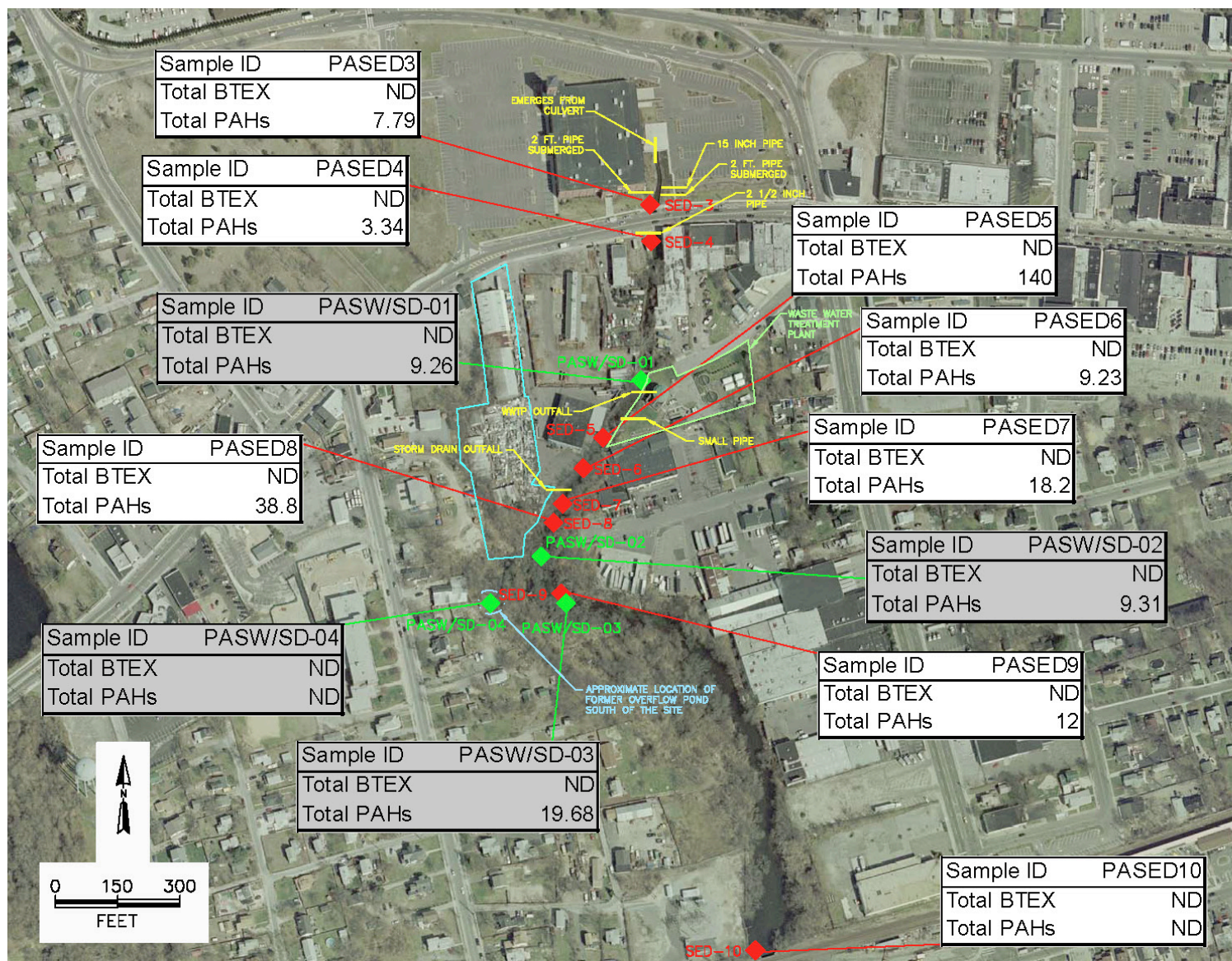
Conceptual Site Model



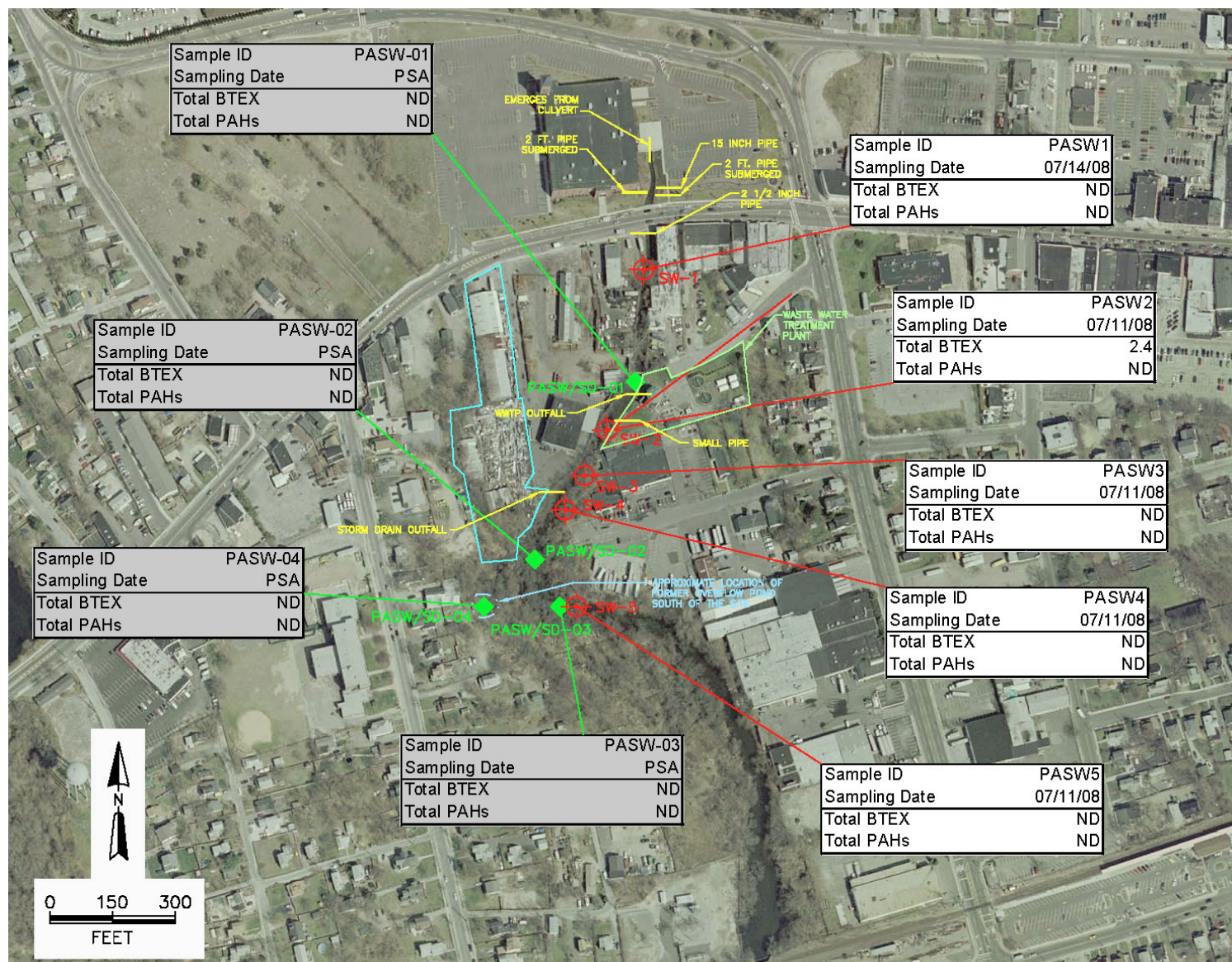
Conceptual Site Model



Sediment Results



Surface Water Results



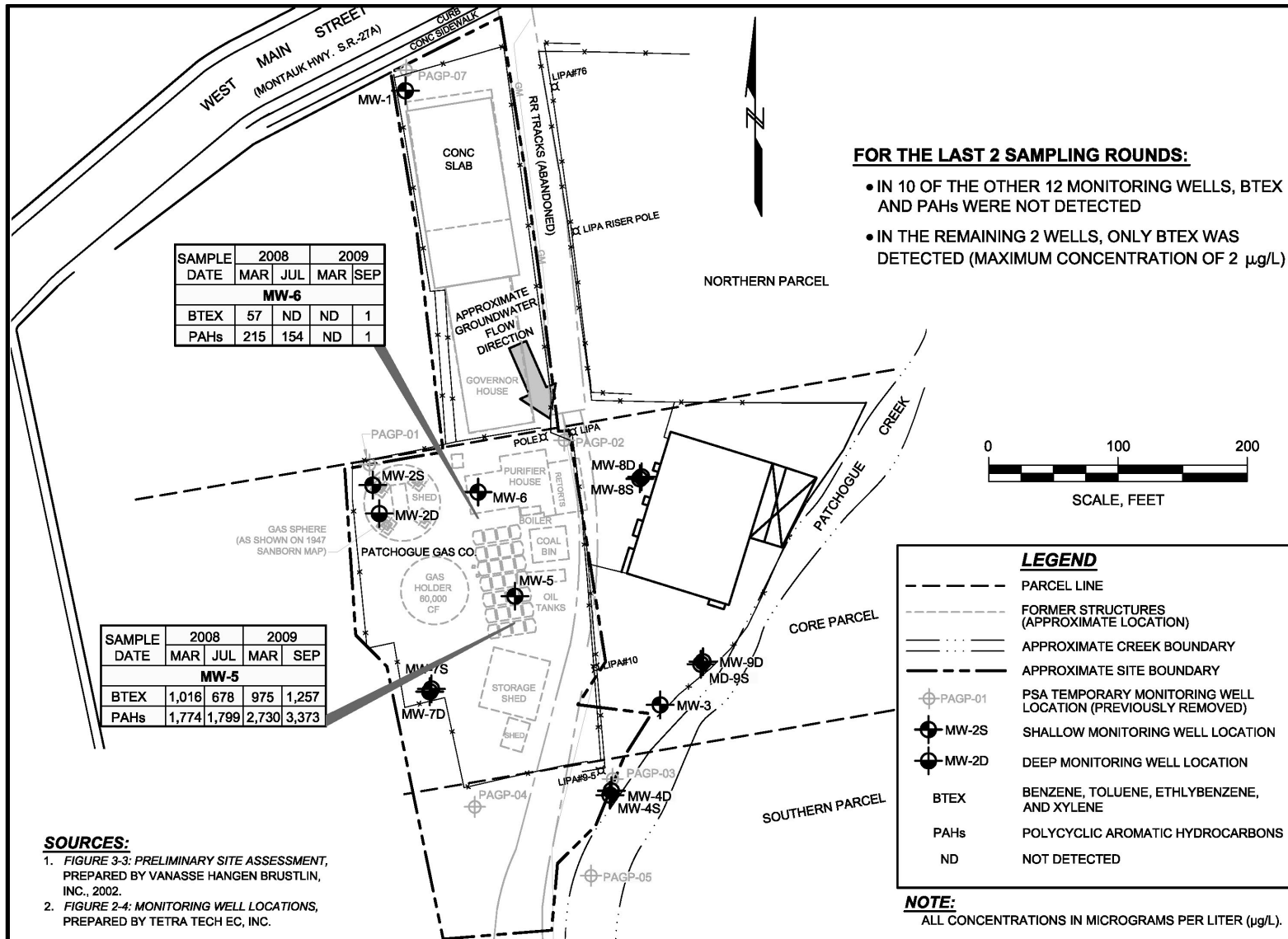
LEGEND

- PASW/SD-01 (Green Diamond) PSA SURFACE WATER SAMPLE LOCATION
- SW-1 (Red Circle with Cross) RI SURFACE WATER SAMPLE LOCATION
- (Blue Line) SITE BOUNDARY

NOTES:

1. ALL RESULTS ARE REPORTED IN MG/L.
2. BOXES SHADED GRAY PRESENT DATA FROM THE PSA.

Groundwater Quality Results



Groundwater Results

- ◆ Groundwater is Within Approximately 5 Feet of Land Surface and Flows to the South/Southeast
- ◆ Groundwater Sampled Twice During RI (2008) and Twice Subsequently (2009)
- ◆ Impacts Localized to Central Portion of Site (MW-5) in Vicinity of Former High Pressure Gas Tanks and Impacted Shallow Soil

Summary and Conclusions

- ◆ The Remedial Investigation delineated the MGP impacts from various media, such as surface water, soil, groundwater, sediment, and soil vapor.
- ◆ During the RI, the data showed no current open pathways through which people could be exposed to potentially hazardous materials at levels of concern and very limited off-site presence of contaminants. Consequently, no risk of imminent harm will result.
- ◆ Groundwater sampling will continue to ensure contaminants are not migrating through the groundwater.

Future Steps

- ◆ Continued twice annual groundwater monitoring
- ◆ Prepare a Focused Feasibility Study
- ◆ Determine remedial alternative
- ◆ NYSDEC will present the alternative to the public in a Proposed Remedial Action Plan
- ◆ National Grid will prepare a remedial work plan
- ◆ Once approved, the remedial action will take place
- ◆ Removal of visually impacted soil and replaced with clean fill eliminating secondary source for soil, groundwater, and sediments.

Contact Information

Questions or concerns about the work or the site, call:

- ◆ National Grid Hotline – (631) 348-6100
- ◆ NYSDEC, Lisa Gorton – (518) 402-9564
- ◆ NYSDOH, Jacquelyn Nealon – (800) 458-1158 Ext. 27880
- ◆ National Grid Community Relations –

James Christman – (516) 545-5035

Questions and Answers

- ◆ Please state your name and the street on which you live
- ◆ Please only one question or comment at a time
- ◆ Please try and keep questions or comments to 1 minute